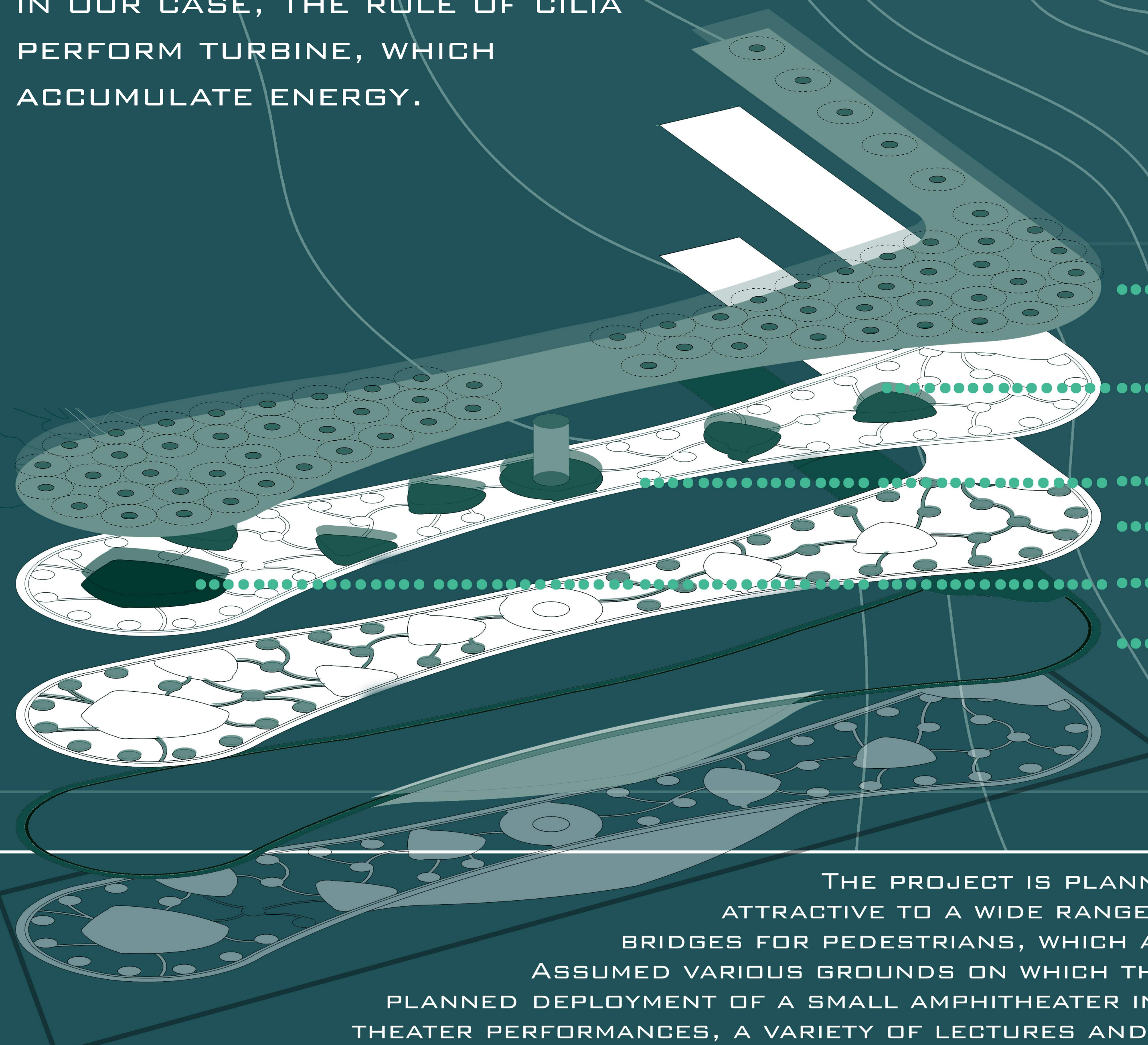


GENERAL PLAN OF THE PROJECT IS
INSPIRED BY BIONIC FORMS OF
INFUSORIAN IN THE SCI-FI STYLE,
SYMBOLIZING THE FUTURE

ALONG THE PERIMETER OF THE ISLAND PROVIDES
FOR INSTALLATION ALLOWING TO GENERATE ENERGY
THROUGH SURF WAVES. FOR EXAMPLE INFUSORIAN BODY
COVERED WITH CILIA, WITH WHICH IT MOVES,
IN OUR CASE, THE ROLE OF CILIA
PERFORM TURBINE, WHICH
ACCUMULATE ENERGY.



..... TREE

..... EXHIBITIONS

..... MAIN CONTAINER

..... PATH

..... CAFE

..... BIKEWAYS

..... SITE



THE PROJECT IS PLANNED TO THE DEVICE NUMBER OF RECREATIONAL ACTIVITIES THAT SHOULD BE
ATTRACTIVE TO A WIDE RANGE OF PEOPLE OF DIFFERENT AGES AND INTERESTS. BETWEEN THE HANGING
BRIDGES FOR PEDESTRIANS, WHICH ARE ALSO DUPLICATED FOR CYCLISTS, SKATERS AND OTHERS.
ASSUMED VARIOUS GROUNDS ON WHICH THE SPORTS FACILITIES, EXHIBITION SPACES CAN BE ARRANGED,
PLANNED DEPLOYMENT OF A SMALL AMPHITHEATER IN WHICH ARE CARRIED OUT BOTH SPONTANEOUS AND PLANNED
THEATER PERFORMANCES, A VARIETY OF LECTURES AND OTHER EVENTS.

