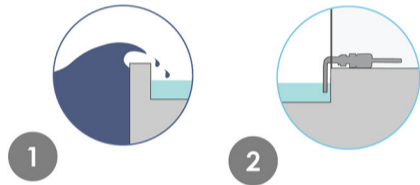


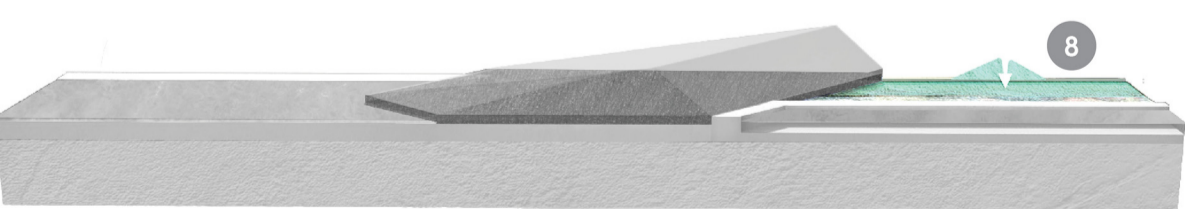
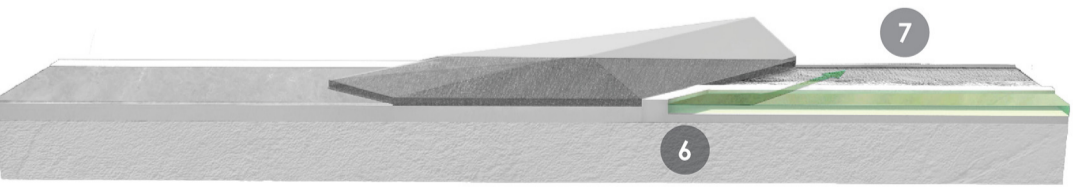
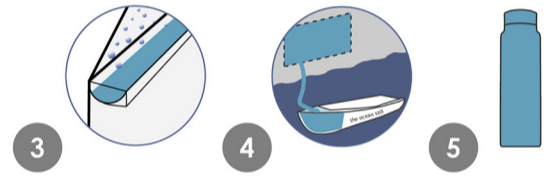
SEAWATER WARMING

1. Wave action charges the warming pool with seawater
2. The warm, salty water is pumped into the Still



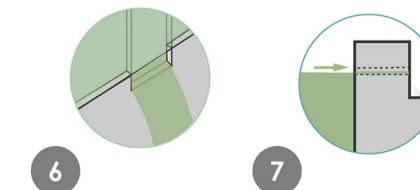
MAKING FRESHWATER

3. The salt water evaporates, condenses, and is collected in a distillate channel
4. Freshwater is harvested from breakwater cisterns into pier-bound freshwater ferries
5. The Ocean Still provides drinking water for all visitors to the Santa Monica Pier



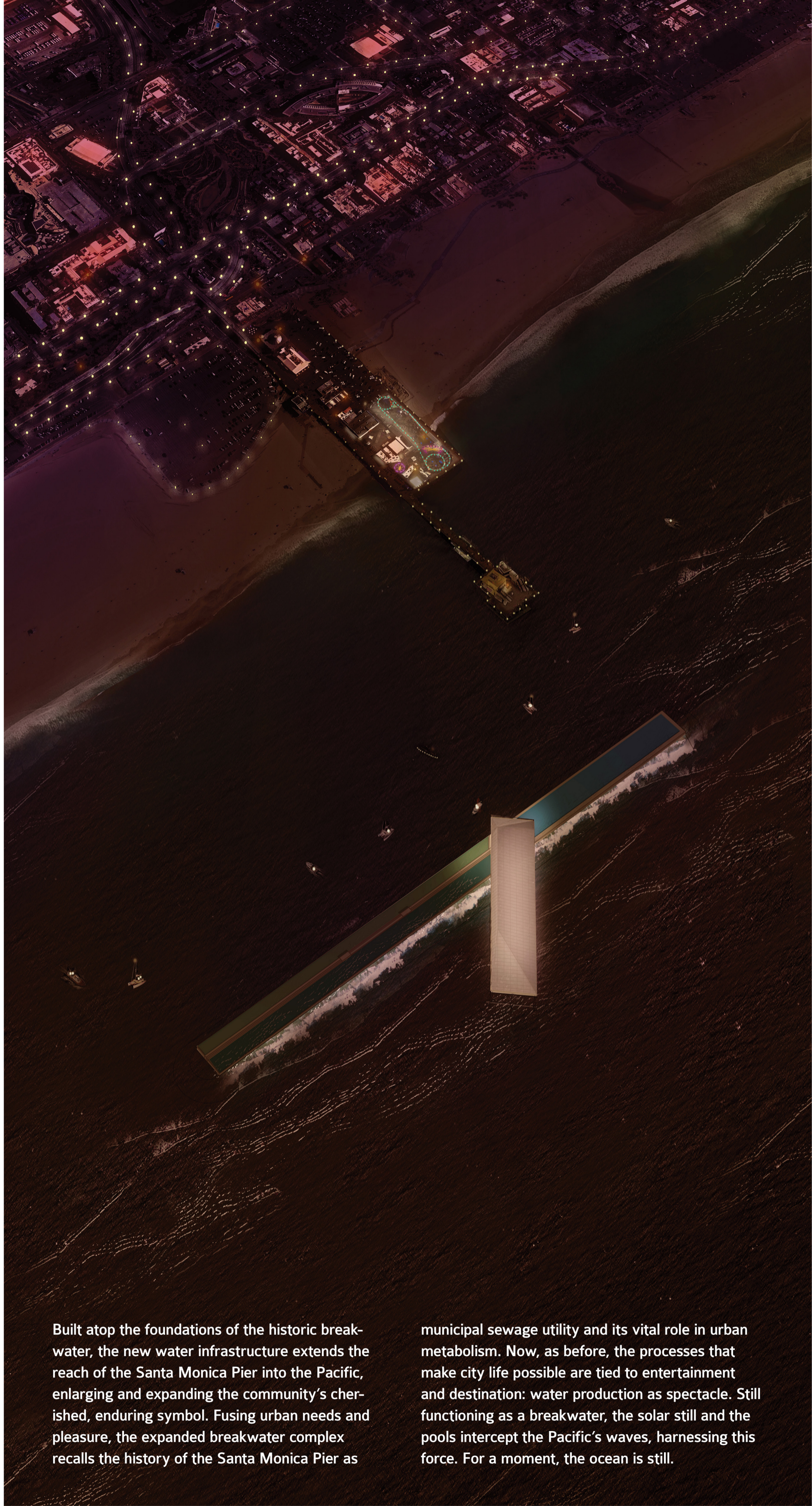
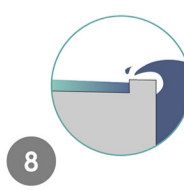
BRINE COLLECTION

6. Brine is released into the Brine Pool once salinity has increased three-fold
7. As brine reaches the upper weep holes it moves into the Mixing Pool for dilution



SLOWLY RELEASE BRINE

8. Wave action dilutes and recaptures brine back to the Pacific Ocean



Built atop the foundations of the historic breakwater, the new water infrastructure extends the reach of the Santa Monica Pier into the Pacific, enlarging and expanding the community's cherished, enduring symbol. Fusing urban needs and pleasure, the expanded breakwater complex recalls the history of the Santa Monica Pier as

municipal sewage utility and its vital role in urban metabolism. Now, as before, the processes that make city life possible are tied to entertainment and destination: water production as spectacle. Still functioning as a breakwater, the solar still and the pools intercept the Pacific's waves, harnessing this force. For a moment, the ocean is still.