

CONNECTING TO THE CITY

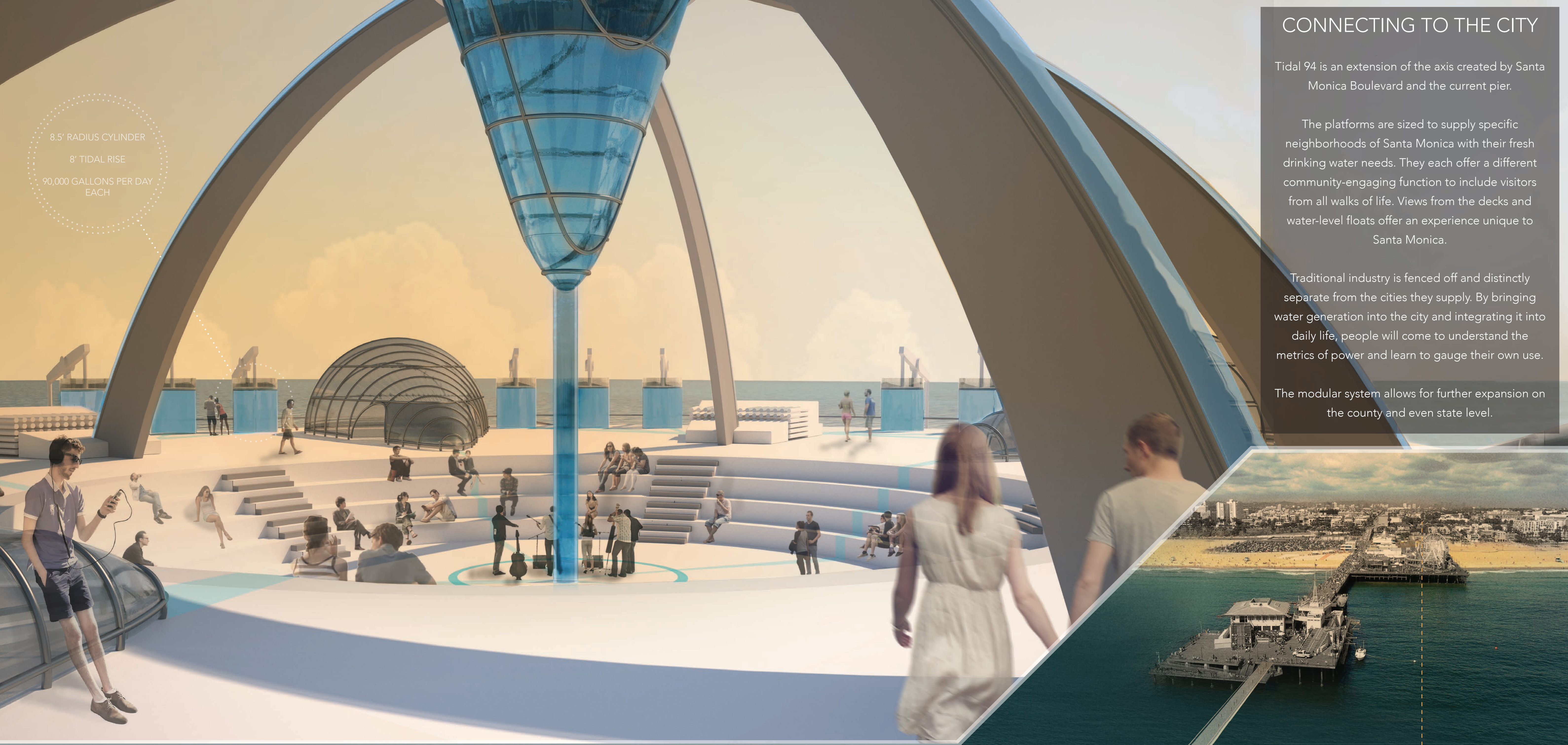
Tidal 94 is an extension of the axis created by Santa Monica Boulevard and the current pier.

The platforms are sized to supply specific neighborhoods of Santa Monica with their fresh drinking water needs. They each offer a different community-engaging function to include visitors from all walks of life. Views from the decks and water-level floats offer an experience unique to Santa Monica.

Traditional industry is fenced off and distinctly separate from the cities they supply. By bringing water generation into the city and integrating it into daily life, people will come to understand the metrics of power and learn to gauge their own use.

The modular system allows for further expansion on the county and even state level.

8.5' RADIUS CYLINDER
8' TIDAL RISE
90,000 GALLONS PER DAY
EACH



SKATEPARK:

NORTH MONTANA

10 CYLINDERS
900,000 GALLONS PER DAY



SALT MARKET:

DOWNTOWN AND SOUTH BEACH

20 CYLINDERS
1,800,000 GALLONS PER DAY



SPLASHPAD:

WILSHIRE AND NORTHEAST

16 CYLINDERS
1,400,000 GALLONS PER DAY



OUTDOOR GALLERY:

MID CITY AND SANTA MONICA

20 CYLINDERS
1,800,000 GALLONS PER DAY



EVENT SPACE:

OCEAN PARK, SUNSET PARK, AND PICO

28 CYLINDERS
2,400,000 GALLONS PER DAY

SANTA MONICA:

94 CYLINDERS
8,300,000 GALLONS PER DAY