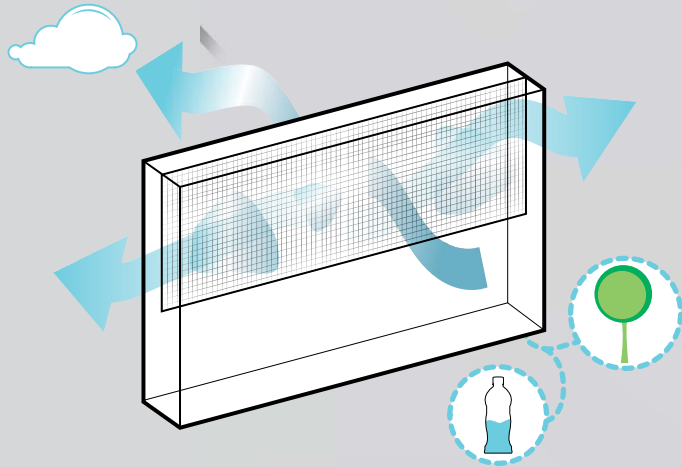
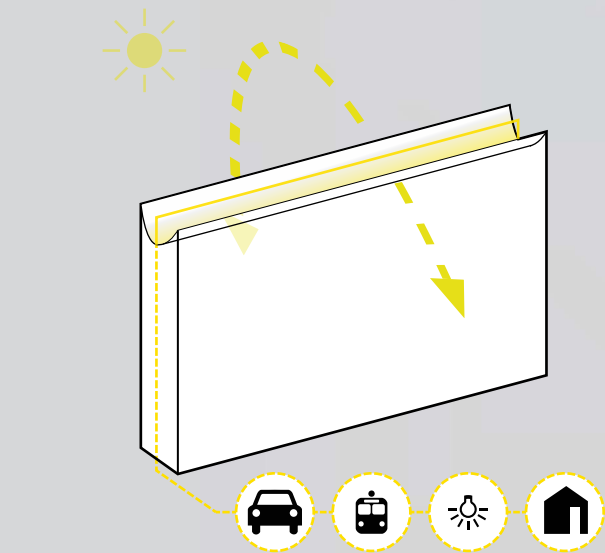


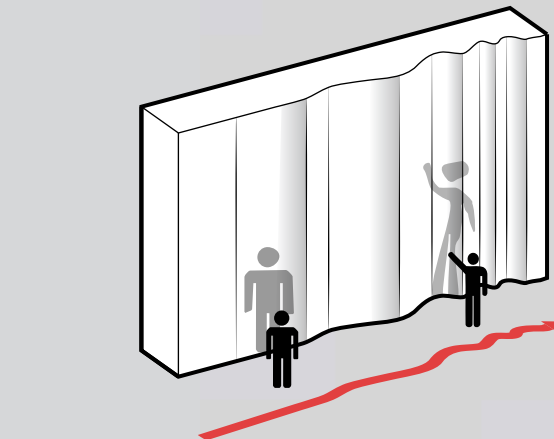
**THE WALL** 's reflecting surface is the past. The construction of the city of Santa Monica. The present is the core's wall. Engenders energy and teaches life. Beyond the wall is the future, the displacement of nature. In a sense, the wall is like the chalk board at school. A reminder of place, where to learn and disappears when overwhelmed.



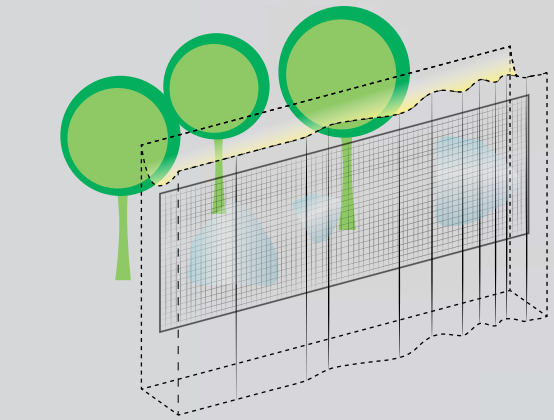
**fog catcher**  
for every 6 linear meters, the net harvests water from fog. we could collect 500 gallons a day.



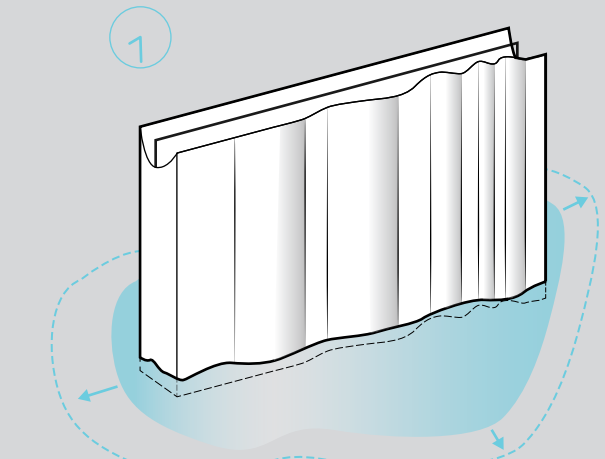
**parabolic trough**  
the 500 meters of the wall can allocate 205 parabolic trough arrays. Enough to generate 750 MWh annually.



**warped one-way mirrors.**  
the east side of the wall consists of progressively warped mirrored surfaces that reflects on everyday complexities.



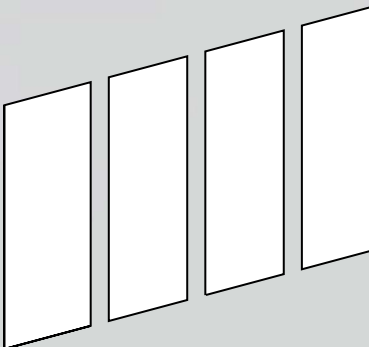
**revelation.**  
the west side of the wall is composed of wild nature. the wall consists of low reflective translucent spaced panels.



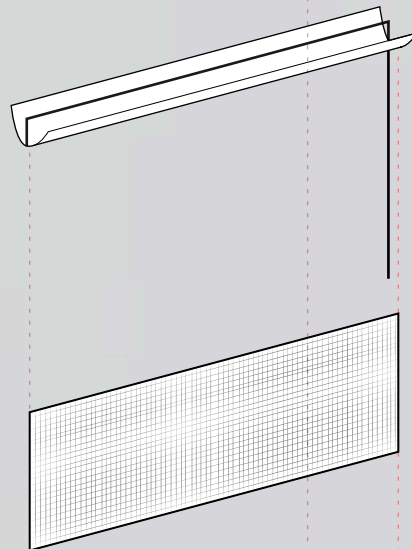
**high tide.**  
the wall is flooded during high tide.



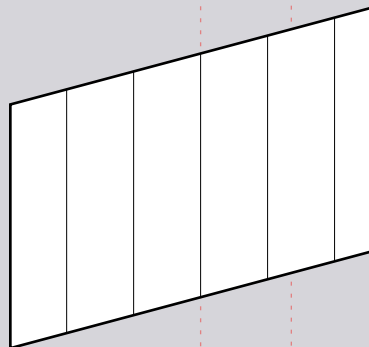
translucent surfaces



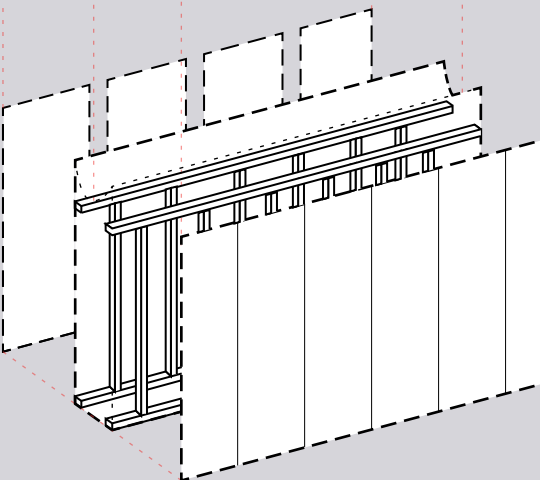
parabolic trough + net



one-way mirrored surface



steel structure



**exploded wall**