

Brackish water

Suction Pipe

CDI Desalination Rail

Promenade

Water Storage

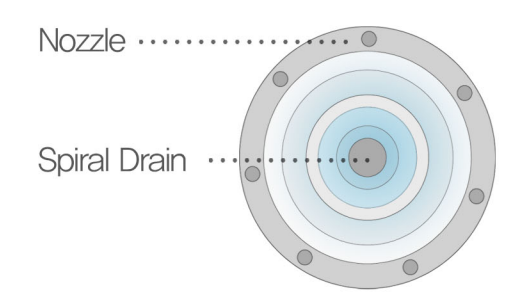
Fresh water

The artwork serves as a seawater desalination facility using Capacitive deionization (CDI). Brackish water sucked in by the substructures of the installation become drinking water by passing through the rails in its system. The rails are arranged in sequential order so that the visitors can follow the process and visually see and recognize the importance of the system.

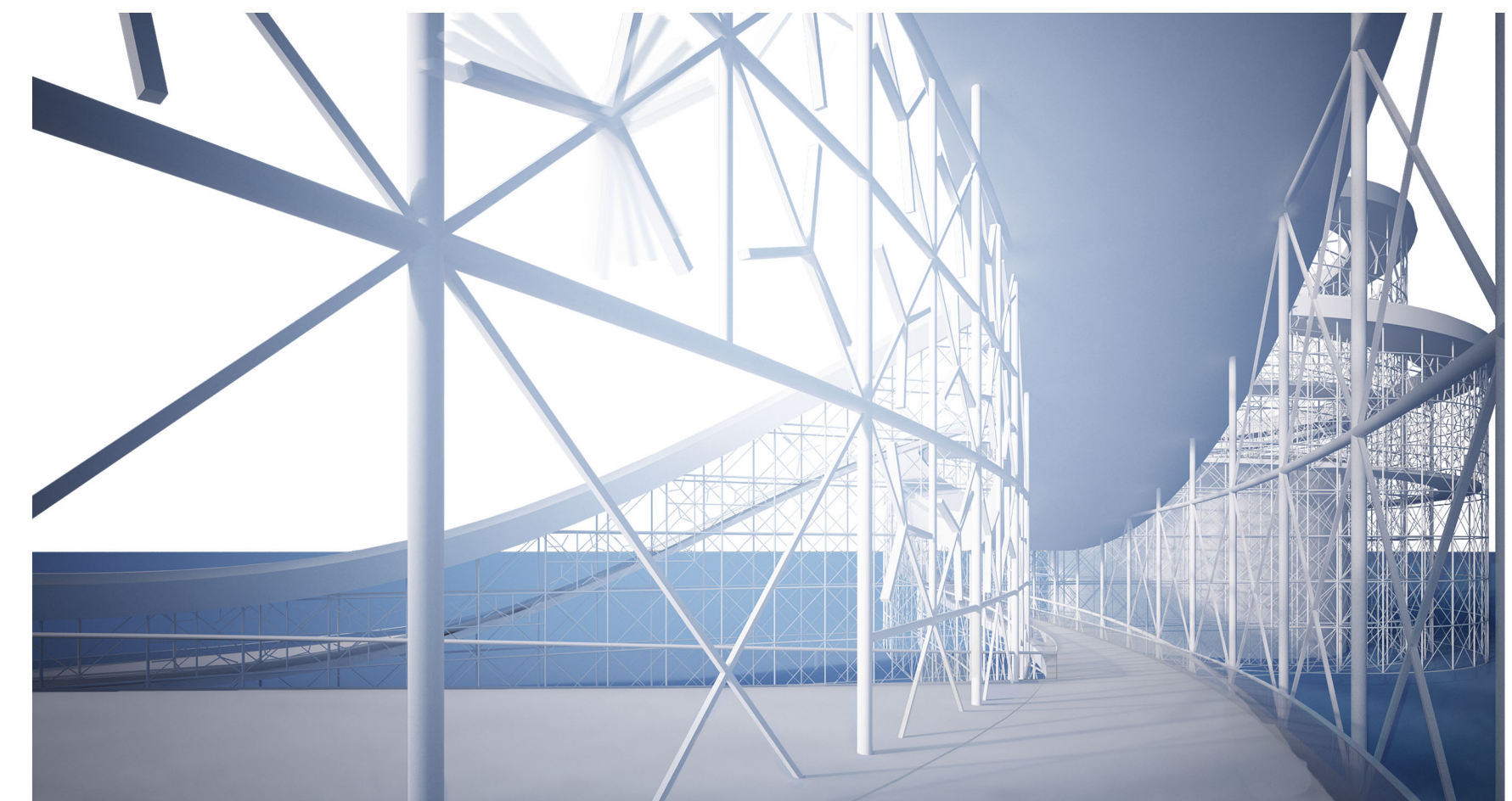
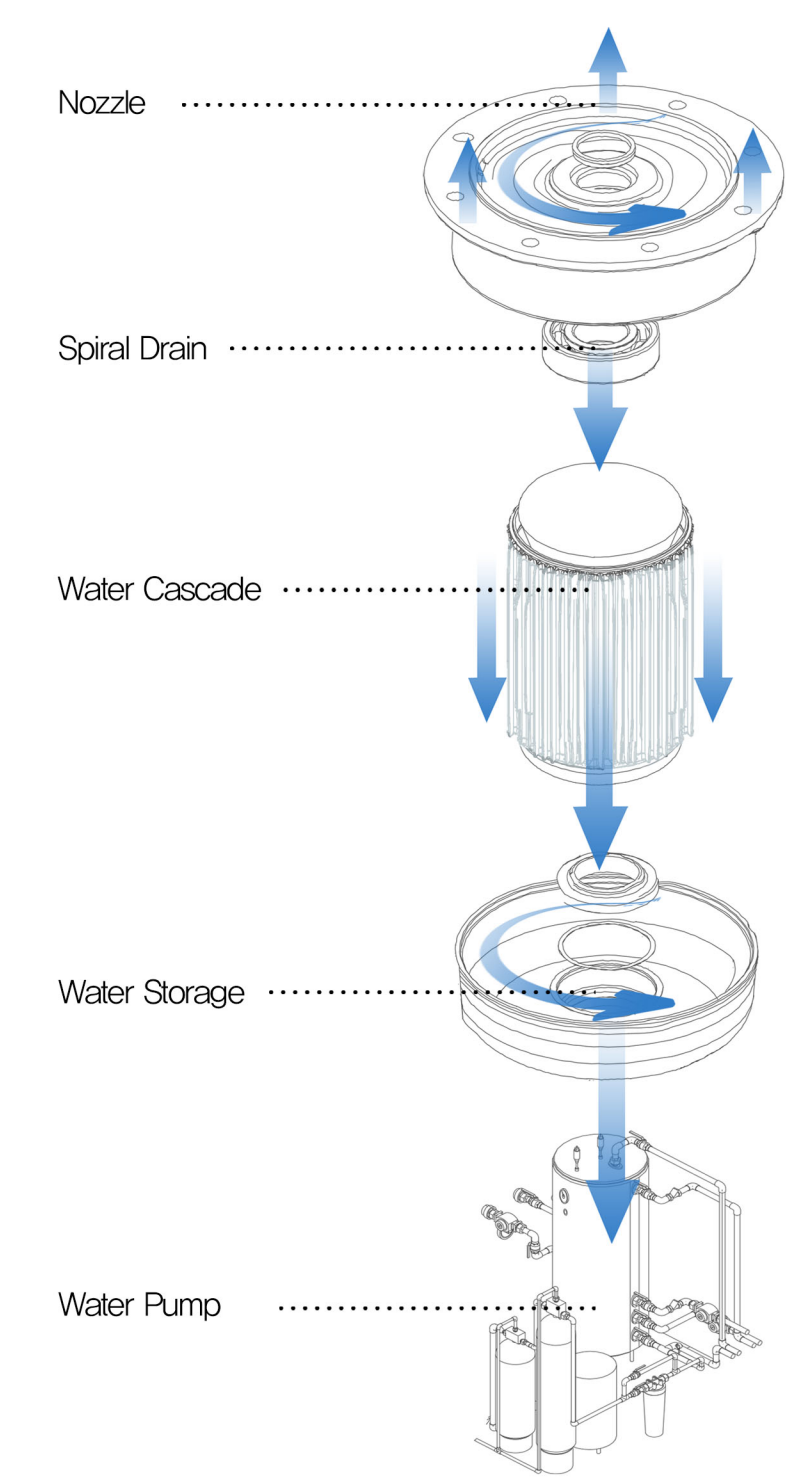
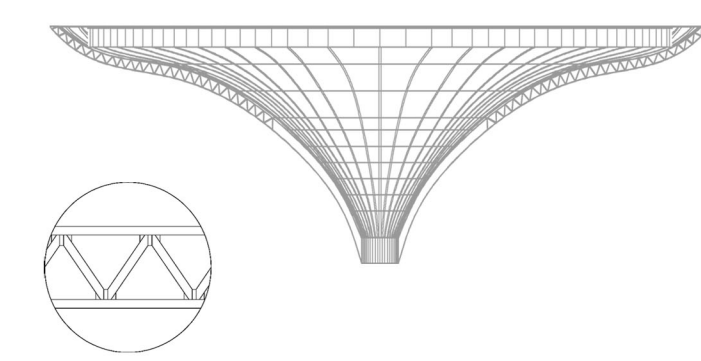
Water Tower

On the peak of the water tower, the visitors will look down the walkway and the water rails. This helps them to realize the importance of fresh water, renewable energy, as well as Santa Monica Pier itself; thus combining our joint efforts into one experience.

Plan



Inside Section Of The Spiral Drain



Structure Section

