

# 01 DEW DROP

The “Dew Drop” is an artificial topography that produces both drinking water and clean energy. This is possible due to a system that during the day accumulates heat from the solar radiation, up to 960 W/m<sup>2</sup> in the sunniest days in the case of Los Angeles.

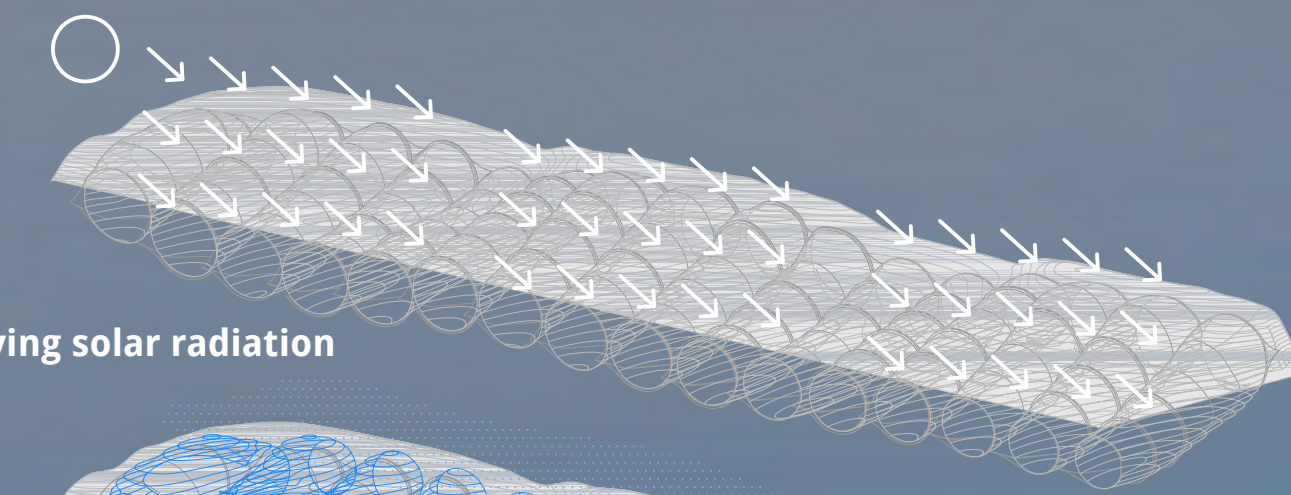
After the dusk, once the topography surface has cooled down, the complementary system starts running naturally, the topography refrigerates its superficial coating in order to condensate the water from the atmospheric moisture. This technique is suitable for Santa Monica since the daily average of relative humidity remains at around 77%.



Day time



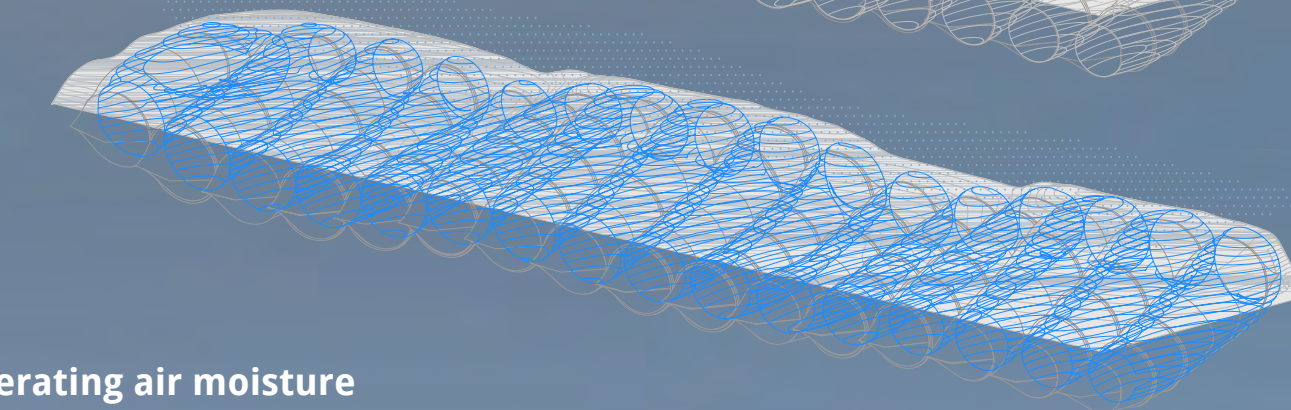
Pipe Network receiving solar radiation



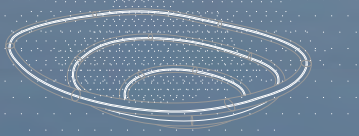
Night time



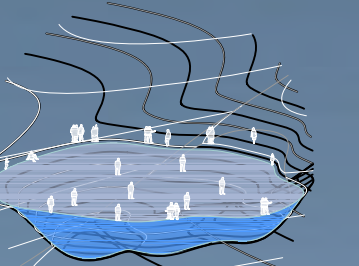
Pipe Network refrigerating air moisture



Shell Light Feature from solar energy



Pipe Network refrigerating air moisture



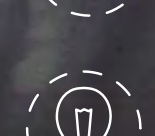
Source of Drinking Water: Condensation of ambient moisture



Source of Energy: Solar Thermal Collector



Urban benefits: Leisure, Enviromental and health amelioration



Cultural Enrichment: Iconic Sustainable Public Space

