

● Primary platform

● A curved LOOP is designed to serve as the AUDIENCE PATH

● Piercing 2 holes among our loop

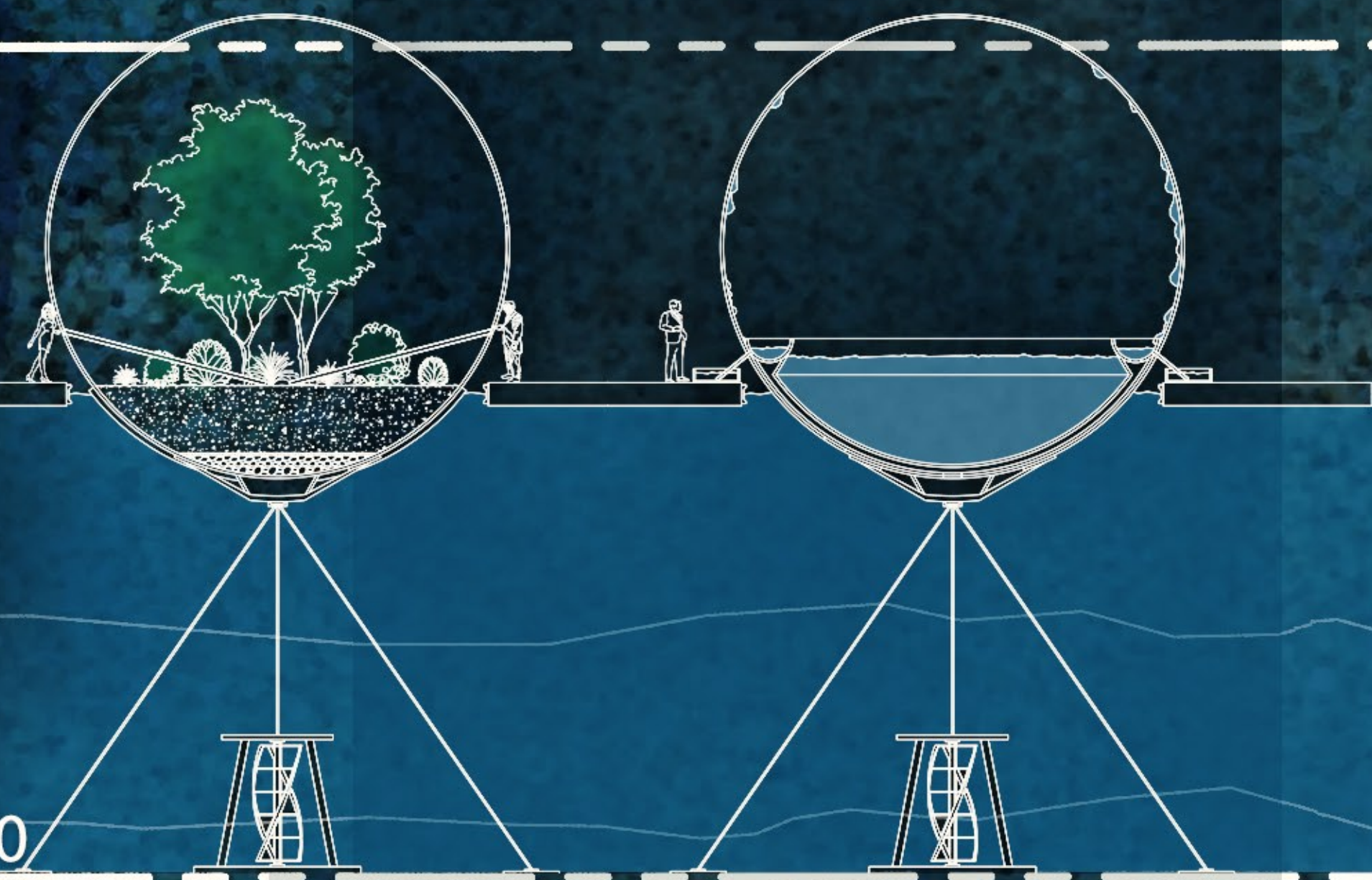
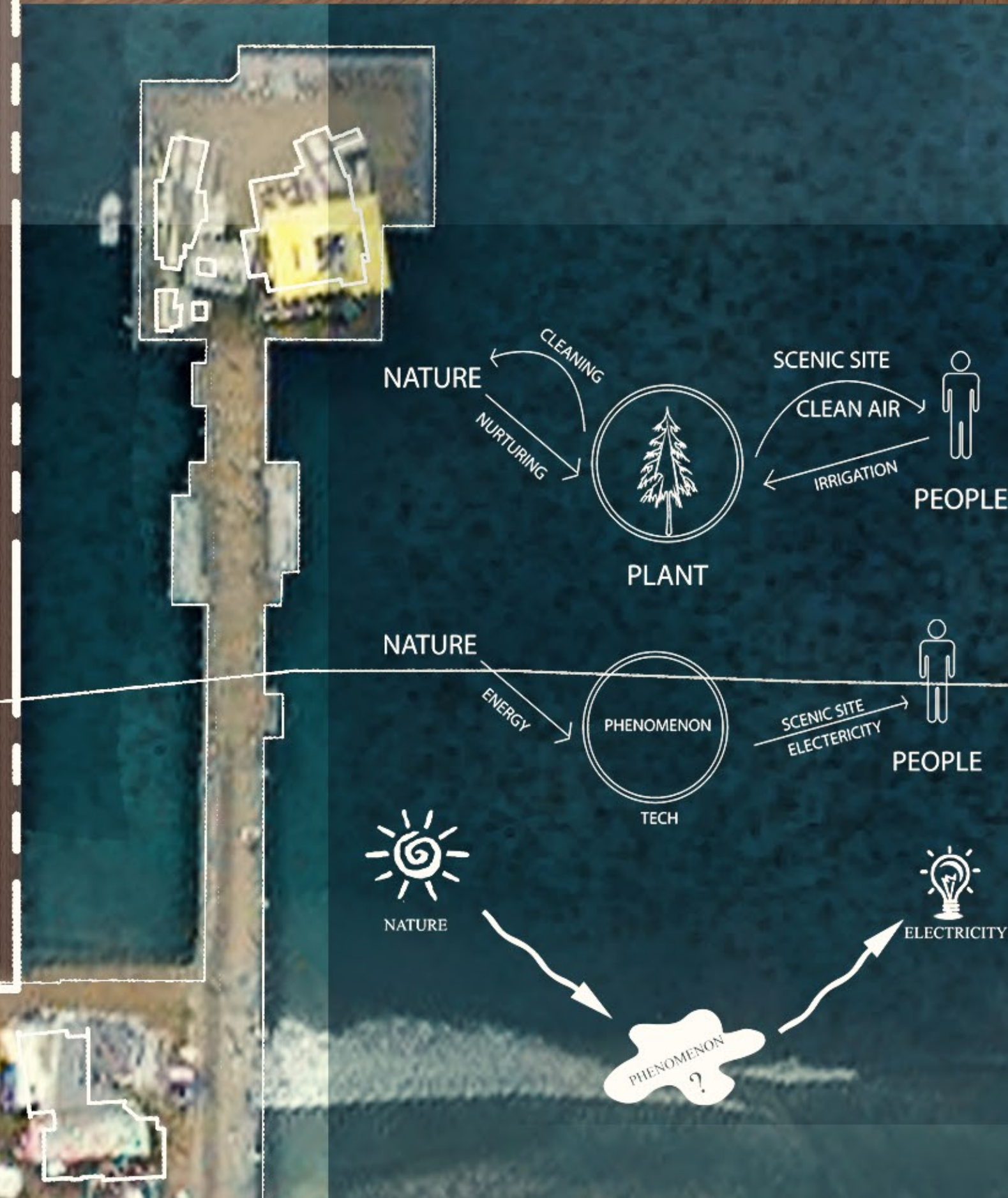
● Our GREEN SPHERES are accommodated right at the center of those hole. Hence these holes serve alike a STILLING BASIN

● Adding some other thirsty green spheres on the loop to be irrigated by our audience

● And adding some BLUE SPHERES to both serve the GREEN SPHERES, and also to produce water

Site Plan 1:500

Sphere Sections 1:100



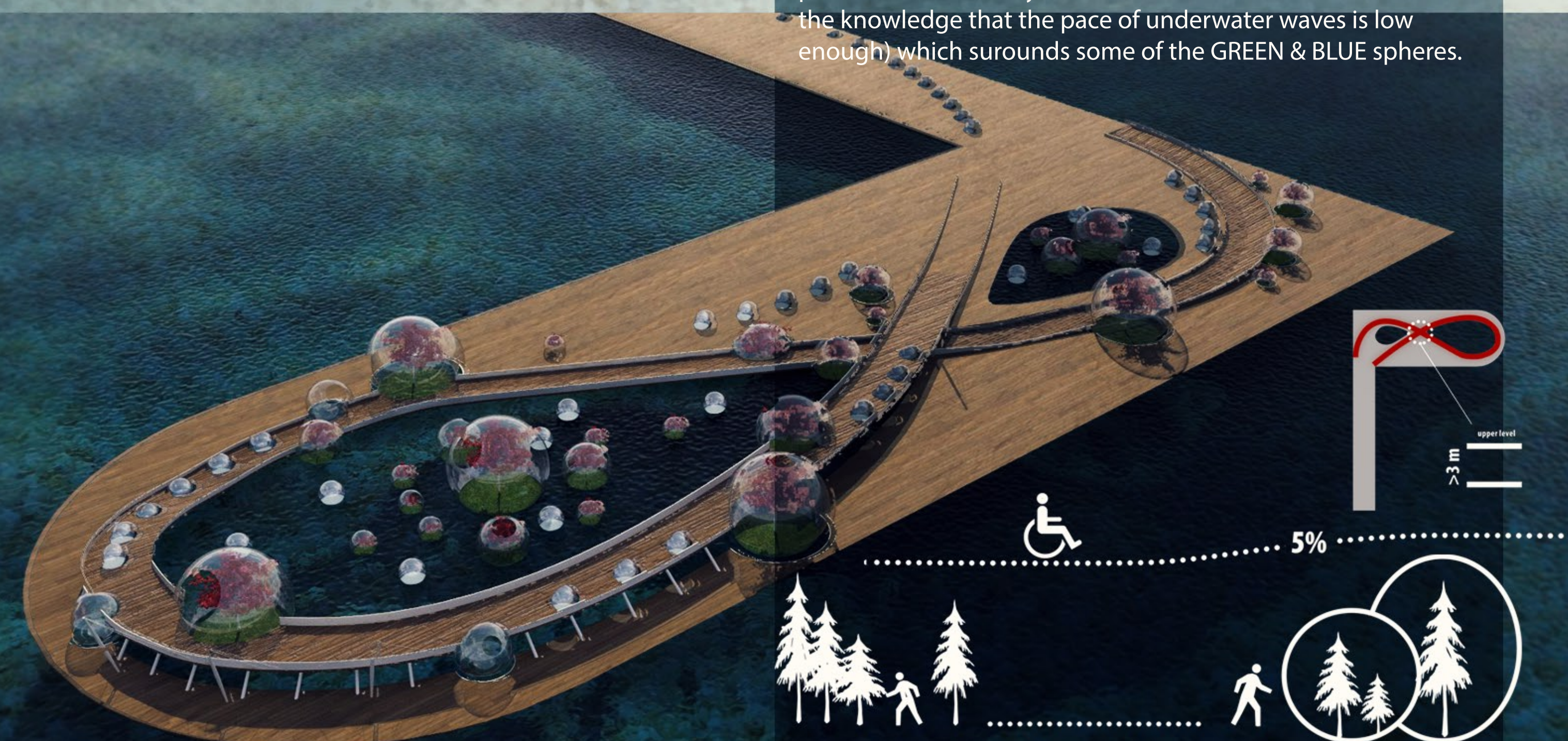
The loop path is designed in a way that takes its audience and envelops them into a journey where in they will be welcomed by our GREEN & BLUE spheres, they will water the floating jungle and of course enjoy this interesting landmark.

The shape of the loop is designed in a way that takes people from the very beginning of the platform, passes them through floating jungle and takes them back to the first spot while experiencing an amazing feeling which we call it "Jungle Feeling".

That is to say, people walk on this loop with a 5% slope and experiences different altitudes whilst wandering through the floating greeneries. But the means of this raised curve we give our audience the ability to explore different levels of the trees and sceneries. That's why we call it the "Jungle Feeling". The great length of the platform helped us to design a long loop that rises from the primary levels of the platform and continues on to the higher level with a 5% slope which is appropriate for the attendance of disabled people as well.

This rate of the slope and adequate length of the loop creates enough distance between the two levels of the loop for one to overpass the other (over 3 meters)

Another quality which is associated with the loop is the STILLING BASIN created in the middle. We designed two voids in our platform, so that they would serve like a STILLING BASIN (with the knowledge that the pace of underwater waves is low enough) which surrounds some of the GREEN & BLUE spheres.



5%

upper level